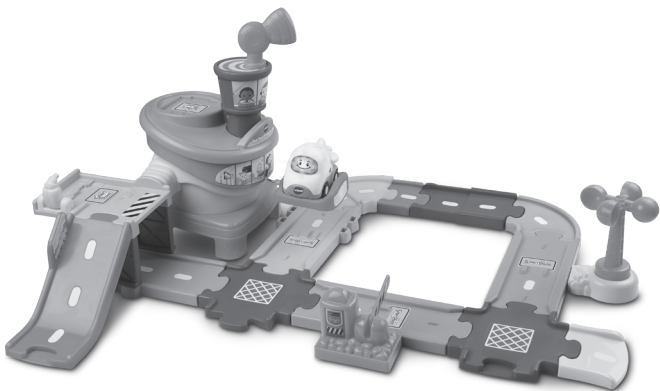


vtech[®]
Baby

User's Manual

Toot-Toot Drivers

Airport



© 2013 VTech
Printed in China
91-002826-001 

VTech understands that a child's needs and abilities change as they grow and with that in mind we develop our toys to teach and entertain at just the right level...

vtech Baby

Toys that will stimulate their interest in different textures, sounds and colours

I am...

...responding to colours, sounds and textures

...understanding cause and effect

...learning to touch, reach, grasp, sit-up, crawl and toddle

Birth-36 months



Pre-School

Interactive toys to develop their imagination and encourage language development

I want...

...to get ready for school by starting to learn the alphabet and counting

...my learning to be as fun, easy and exciting as can be

...to show my creativity with drawing and music so my whole brain develops

3-6 years



Electronic Learning Computers

Cool, aspirational and inspiring computers for curriculum related learning

I need...

...challenging activities that can keep pace with my growing mind

...intelligent technology that adapts to my level of learning

...National Curriculum based content to support what I'm learning at school

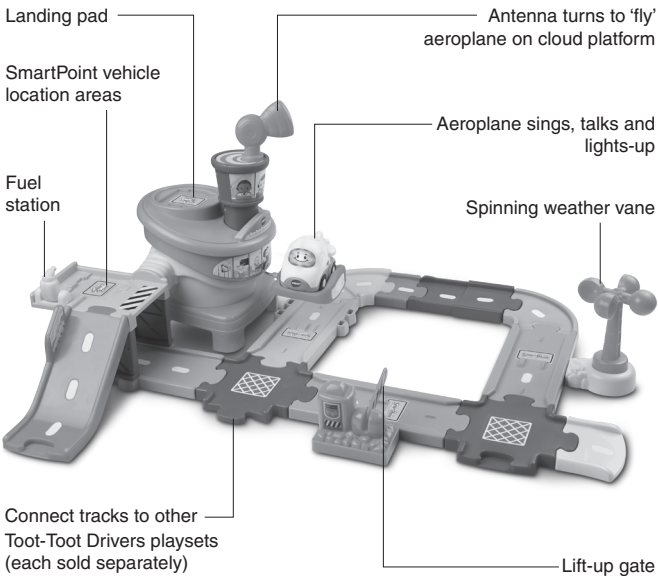
4-10 years

To learn more about this and other VTech® products, visit www.vtechuk.com

INTRODUCTION

Thank you for purchasing the **VTech® Toot-Toot Drivers Airport** learning toy!

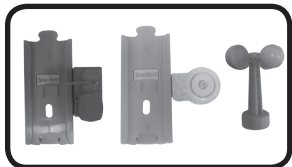
Playtime with miles of learning! Welcome to the **Toot-Toot Drivers Airport** by **VTech®**. This interactive playset includes six **SmartPoint** locations that respond to the included aeroplane and other **Toot-Toot Drivers** vehicles (each sold separately). The Airport also features lots of fun manipulative elements to stimulate your child's imagination and encourage role-play fun. The tracks can connect to other **Toot-Toot Drivers** playsets (each sold separately).



INCLUDED IN THIS PACKAGE



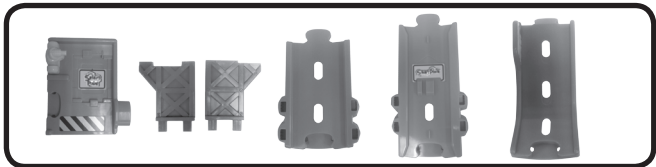
One VTech® Toot-Toot Drivers
Aeroplane



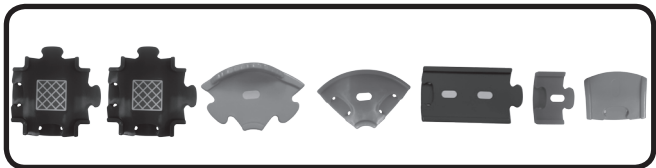
One toll booth with track piece
One weather vane base with
track piece
One weather vane



One airport base
One airport tower
One control tower with antenna



One fuel station platform
Two supports
Two fuel station base track pieces
One ramp track piece



Two crossroad track pieces

Two curved track pieces

One straight track piece

One mini straight track piece

One short straight track piece

One user's manual

WARNING:

All packing materials, such as tape, plastic sheets, packaging locks and tags are not part of this toy, and should be discarded for your child's safety.

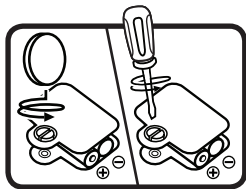
NOTE:

Please keep this user's manual as it contains important information.

GETTING STARTED

BATTERY INSTALLATION

1. Make sure the unit is turned **OFF**.
2. Locate the battery cover on the bottom of the aeroplane. Use a coin or a screwdriver to loosen the screw.
3. Install 2 new 'AAA' (AM-4/LR03) batteries following the diagram inside the battery box. (The use of new alkaline batteries is recommended for maximum performance.)
4. Replace the battery cover and tighten the screw to secure.



BATTERY NOTICE

- Use new alkaline batteries for maximum performance.
- Use only batteries of the same or equivalent type as recommended.
- Do not mix different types of batteries: alkaline, standard (carbon-zinc) or rechargeable (Ni-Cd, Ni-MH), or new and used batteries.
- Do not use damaged batteries.
- Insert batteries with the correct polarity.
- Do not short-circuit the battery terminals.
- Remove exhausted batteries from the toy.
- Remove batteries during long periods of non-use.
- Do not dispose of batteries in fire.
- Do not charge non-rechargeable batteries.
- Remove rechargeable batteries from the toy before charging (if removable).
- Rechargeable batteries are only to be charged under adult supervision.

Disposal of batteries and product



The crossed-out wheellie bin symbols on products and batteries, or on their respective packaging, indicates they must not be disposed of in domestic waste as they contain substances that can be damaging to the environment and human health.

The chemical symbols Hg, Cd or Pb, where marked, indicate that the battery contains more than the specified value of mercury (Hg), cadmium (Cd) or lead (Pb) set out in Battery Directive (2006/66/EC).



The solid bar indicates that the product was placed on the market after 13th August, 2005.

Help protect the environment by disposing of your product or batteries responsibly.

For more information, please visit:

www.recycle-more.co.uk

www.recyclenow.com

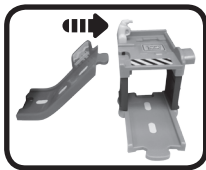
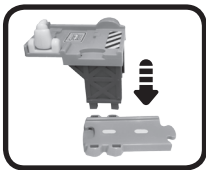
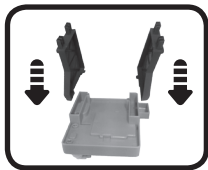
ASSEMBLY INSTRUCTIONS

With the **VTech® Toot-Toot Drivers Airport**, safety comes first. To ensure your child's safety, adult assembly is required.

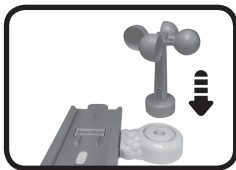
1. **Assemble the airport:** Insert the airport tower into the airport base. Once securely in place, you will hear a loud 'click' sound. Insert the control tower with antenna into the top of the airport tower. Again, you will hear a loud 'click' sound to indicate the control tower is secure.



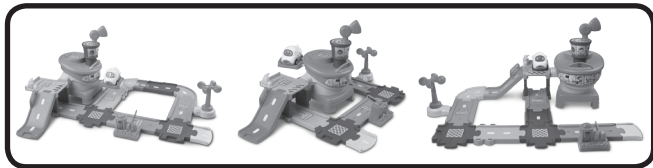
2. **Assemble the fuel station platform:** Insert the two fuel station supports into the bottom of the fuel station platform. Then insert the fuel station supports into one of the fuel station base track pieces. You will hear a loud 'click' sound to indicate the platform is secure. After that, attach the ramp track piece to the fuel station platform.



3. **Assemble the weather vane:** Place the weather vane on its base.



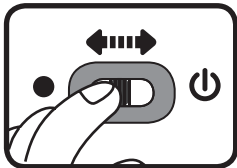
After the above steps, connect these pieces with the included track pieces. You can configure them into different shapes.



PRODUCT FEATURES

1. ON/OFF SWITCH

To turn the aeroplane **ON**, slide the **ON/OFF SWITCH** to the **ON** (☰) position. To turn the aeroplane **OFF**, slide the **ON/OFF SWITCH** to the **OFF** (●) position.

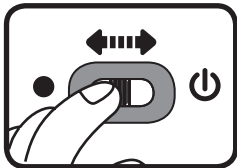


2. AUTOMATIC SHUT-OFF

To preserve battery life, the **VTech® Toot-Toot Drivers Aeroplane** will automatically power-down after approximately 60 seconds without input. The unit can only be turned on again by pressing the light-up screen button or pushing the aeroplane quickly.

ACTIVITIES

1. Slide the **ON/OFF SWITCH** to turn the aeroplane **ON**. You will hear aeroplane sounds, a song and a phrase. The light will flash with the sounds.



2. Press the **LIGHT-UP BUTTON** to hear aeroplane sounds, songs and phrases. The light will flash with the sounds.



3. Push the aeroplane to hear fun sounds and melodies. While the melody is playing, push the aeroplane again to add in fun sounds on top of the melody. The light will flash with the sounds.



4. For added fun, the aeroplane interacts with the **Toot-Toot Drivers Airport**. Simply roll the aeroplane over one of the airport's six **SmartPoints** to see the aeroplane's light flash and to hear greetings, fun sounds, short tunes and sing-along songs. The aeroplane even interacts with other **Toot-Toot Drivers** playsets (each playset sold separately).



MELODY LIST

1. Alouette
2. Hey Diddle Diddle
3. My Bonnie Lies Over the Ocean
4. Oh Where, Oh Where Has My Little Dog Gone?
5. Skip to My Lou
6. ABC Song

Sing-along songs

Sing-along song 1

Look at the beautiful sky.
It's a nice day for flying.
Flying up, flying down!
Flying all around!

Sing-along song 2

Let's take a flight today!
Fly a thousand miles away!

Sing-along song 3

Turn the antenna around!
Take me off the ground!

CARE & MAINTENANCE

1. Keep the unit clean by wiping it with a slightly damp cloth.
2. Keep the unit out of direct sunlight and away from any direct heat source.
3. Remove the batteries when the unit is not in use for an extended period of time.
4. Do not drop the unit on a hard surface and do not expose the unit to moisture or water.

TROUBLESHOOTING

If for some reason the program/activity stops working or malfunctions, please follow these steps:

1. Turn the unit **OFF**.
2. Interrupt the power supply by removing the batteries.
3. Let the unit stand for a few minutes, then replace the batteries.
4. Turn the unit **ON**. The unit should now be ready to play again.
5. If the product still does not work, replace with an entire set of new batteries.

If the problem persists, please call our Consumer Services Department on 01235 546810 (from UK) or +44 1235 546810 (outside UK) and a service representative will be happy to help you.

IMPORTANT NOTE:

Creating and developing **VTech®** products is accompanied by a responsibility that we take very seriously. We make every effort to ensure the accuracy of the information, which forms the value of our products. However, errors sometimes can occur. It is important for you to know that we stand behind our products and encourage you to call our Consumer Services Department on 01235 546810 (from UK) or +44 1235 546810 (outside UK), with any problems and/or suggestions that you might have. A service representative will be happy to help you.

**CLASS 1
LED PRODUCT**



PRODUCT WARRANTY



Thank you for choosing this quality product from VTech. We hope it will bring many hours of entertainment, imaginative play and learning.

1. The product detailed above is covered by a one year warranty from the date of purchase, against any defects in materials or workmanship.
2. The product may be returned to the place of purchase. Alternatively the product can be returned to VTech Electronics Europe plc (see address below), with proof of purchase, without proof of purchase no replacement will be provided.
3. VTech Electronics Europe plc will examine the product and if it is found to be defective due to faulty materials or workmanship, will replace the product at their discretion.
4. If the product covered by this warranty is damaged due to misuse, modification or unauthorised repair, or because of faulty batteries, battery discharge or incorrect electrical connections, then this warranty becomes void.
5. This warranty is personal to the original purchaser and is not transferable.
6. Breakages to the LCD screen are not covered by the warranty.
7. Returns to VTech Electronics Europe plc should include a cheque or postal order for £1.50 towards the cost of return postage and packaging.
8. Products returned to VTech Electronics Europe plc, should be addressed as follows and packed carefully to avoid damage in transit (Please do not include batteries or adaptor).
Please include details of the fault together with your name and address.

VTech Electronics Europe plc, c/o Tablogix Limited, 200 Milton Park, Abingdon, Oxon OX14 4TA

THIS WARRANTY IS OFFERED AS AN EXTRA BENEFIT AND DOES NOT AFFECT CONSUMERS' STATUTORY RIGHTS.

This warranty is valid for the UK and Eire only. For products purchased outside the UK and Eire, please contact your local distributor or place of purchase.

